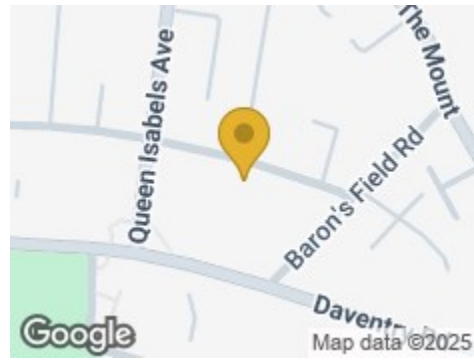


Road Map



Hybrid Map

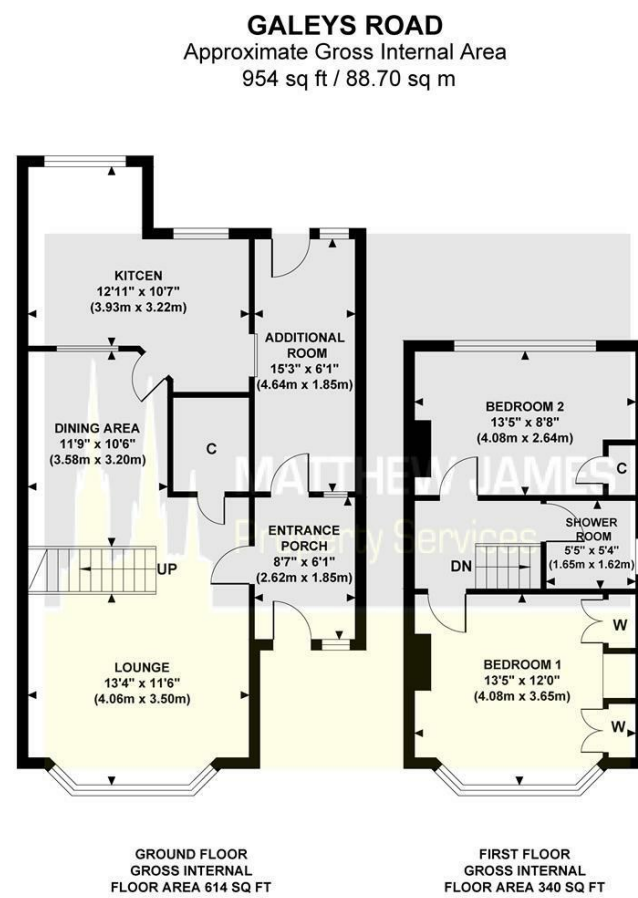


Terrain Map



MATTHEW JAMES
Property Services

Floor Plan



18 Galeys Road
Cheylesmore, Coventry CV3 5GN

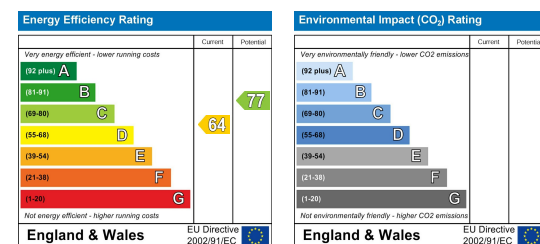
Offers Over £230,000



Viewing

Please contact us on 02477 170170 if you wish to arrange a viewing appointment for this property or require further information.

Energy Efficiency Graph



These particulars, whilst believed to be accurate are set out as a general outline only for guidance and do not constitute any part of an offer or contract. Intending purchasers should not rely on them as statements of representation of fact, but must satisfy themselves by inspection or otherwise as to their accuracy. No person in this firm's employment has the authority to make or give any representation or warranty in respect of the property.

CONTACT INFORMATION

24a Warwick Row, Coventry CV1 1EY
02477 170170

info@matthewjames.uk.com
www.matthewjames.uk.com

Facebook
Twitter



18 Galeys Road

Cheylesmore, Coventry CV3 5GN

Offers Over £230,000



Approach/ Driveway

Vestibule Porch

8'7 x 6'1

Lounge

13'4 x 11'6

Dining Area

11'9 x 10'6

Kitchen

12'11 x 10'7

Additional Room

15'3 x 6'1

Hallway Landing

Bedroom One

13'5 x 12'0

Bedroom Two

13'5 x 8'8

Shower Room

5'5 x 5'4

Rear Garden

